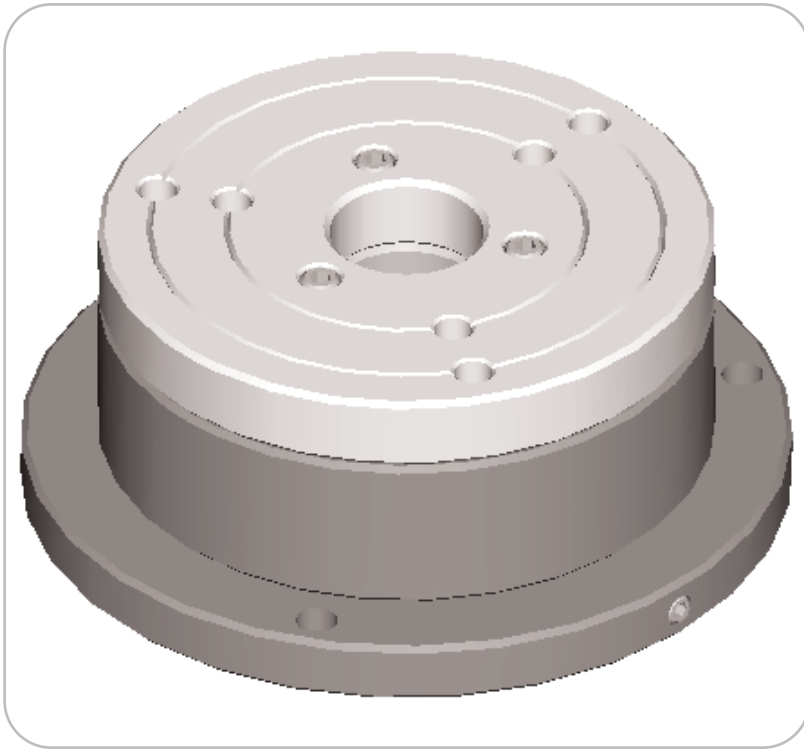


BT - Series, Mechanical Bearing Spin Tables

Precision Rotary Table with Angular Contact Bearings



The **BT**-Series precision mechanical spin tables incorporate pre-loaded angular contact bearings and ground internal shaft to provide an accurate reference axis ideally suited for T.I.R. inspection of workpieces with tolerances to 0.0001" (2.5 μ m)

Since no air supply is required to operate, the **BT**-Series tables are completely portable and can be conveniently used in any shop or lab.

Standard worktable sizes are available in 6", 8", 10" & 12" diameters.

Features:

- $\pm 25\mu$ " ($\pm 0.63\mu$ m) Radial/Axial accuracy
- .0005" (12.5 μ m) Worktable flatness
- 125lb (57kg) Load capacity - High stiffness
- Worktable sizes, $\text{\O}6"$, 8", 10," & 12" standard
- Durable steel worktable and shaft
- Hole through the center design
- Available with motors, encoders and drives
- Custom sizes available upon request
- Low cost

Specifications

BT-150 Series

G HOLES, (3) PLC'S ON THE FOLLOWING BOLT CIRCLE DIA.'S:

150MM/6.00"	200MM/8.00"	250MM/10.00"	300MM/12.00"
Ø88.9MM/3.50"	Ø88.9MM/3.50"	Ø88.9MM/3.50"	Ø88.9MM/3.50"
Ø127MM/5.00"	Ø127MM/5.00"	Ø127MM/5.00"	Ø127MM/5.00"
	Ø165MM/6.50"	Ø165MM/6.50"	Ø165MM/6.50"
		Ø203MM/8.00"	Ø203MM/8.00"
		Ø241MM/9.50"	Ø241MM/9.50"
			Ø279MM/11.00"

F Thru. Hole

To Order:

Specify model number & worktable size

BT-150 / XXX

- 150
- 200
- 250
- 300

Consult ABTech engineering for larger sized spin tables

	150	200	250	300	
A	6.00 - 8.00 - 10.00 - 12.00				Inches
	150	200	250	300	mm
B	Ø7.50" (190.5mm)				
C	3.00" (76.2mm)				
D	.750" (19.05mm)				
E	.625" (15.88mm)				
F	Ø1.50" (38.1mm) Thru. Hole				
G	3/8-16UNC-2B				
H	3 Mounting holes for 1/4" S.H.C.S. on a Ø6.750" (171.45mm) Bolt Circle				

All specifications are subject to change without notification

Tel: 603-358-6431
Fax: 603-358-0196

Applications

- Cylindrical part staging
- T.I.R. Inspection
- Light duty grinding
- Used in lab or shop floor

Accessories

- Granite bases
- Gage stands
- Electronic gage amplifiers
- Gage heads
- Custom tooling

On Line: www.abtechmfg.com