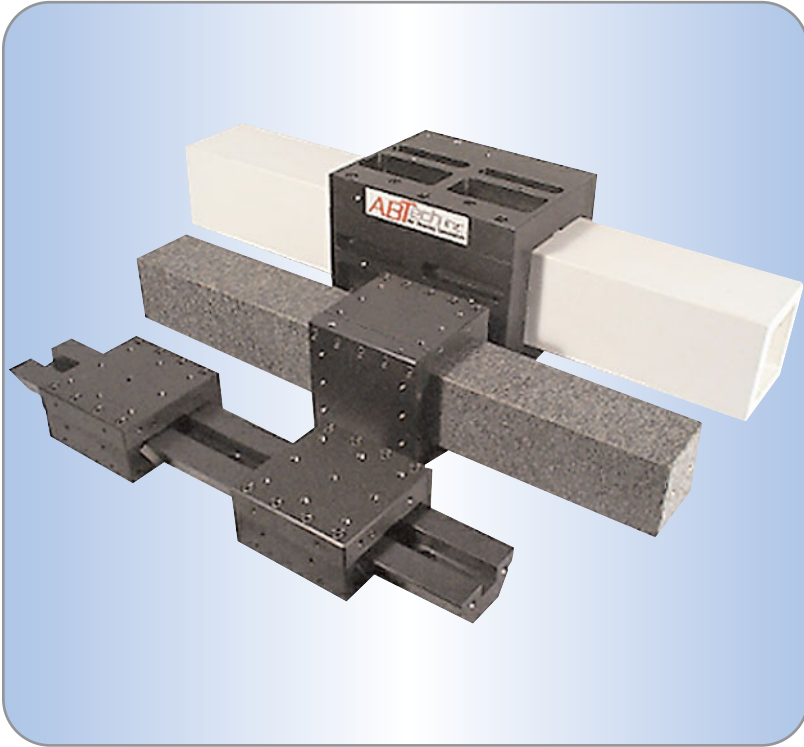


LAB - Linear Air Bearing Slides

Ultra-Precision Linear Motion



ABTech, Inc. offers a full line of Ultra-Precision Air Bearing Linear Slides for applications requiring Ultra-Precision linear motion, such as linear straightness measurement, linear positioning, high-velocity, constant velocity and linear systems requiring no static friction.

ABTech's modular design approach and full engineering services can respond quickly to provide a solution to your O.E.M. needs for Ultra-Precision linear motion.

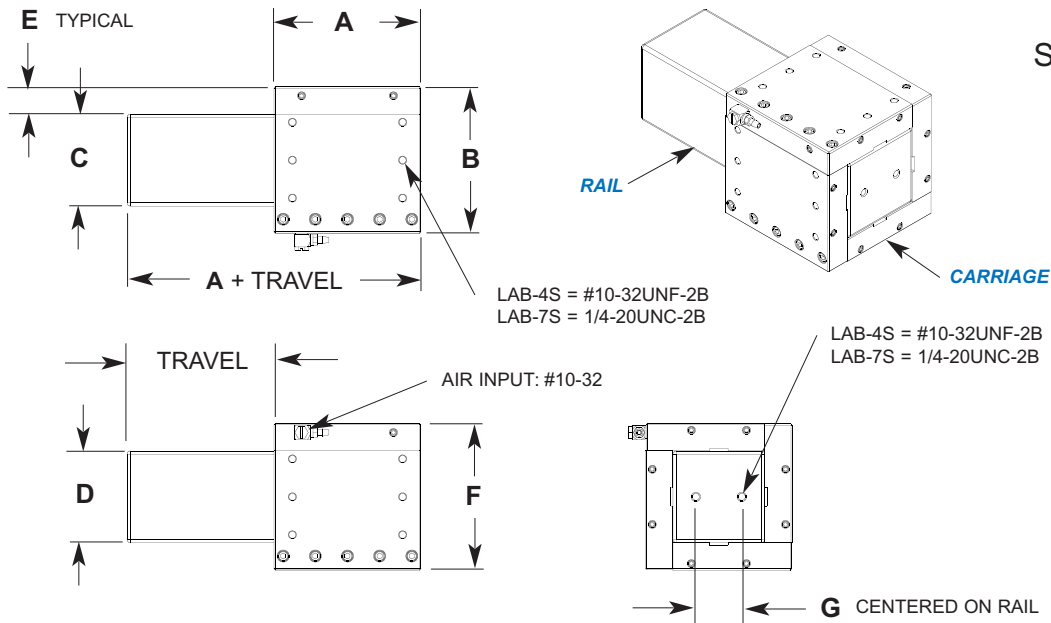
The LAB Slides are Ideal modular components for wafer scanning systems, computer-to-plate systems, linear measurements systems, and vision systems.

Features:

- *Two accuracy grades available for cost effective design*
- *Ultra-smooth motion, no static friction*
- *High load capacity and stiffness*
- *Low air consumption*
- *Modular design - custom systems can be provided for O.E.M.*
- *Magnetically preloaded, vacuum preloaded*
- *Motor drives, encoders, drive amplifiers and controls*
- *Custom tooling and fixturing design and manufacturing*
- *Rail configurations in dovetail, rectangular or square*

LAB - Linear Air Bearing Slides

Specifications



LAB-S Series

Square Rail Linear Box Slides

Consult ABTech for:

- Special sizes and travels
- Custom end mounting
- Custom hole pattern on carriage faces
- Motor drives
- Stacked configurations
- Higher accuracies

	LAB-4S	LAB-7S
TRAVEL	1.00" TO 24.00"	1.00" TO 42.00"
A	4.00"	7.00"
B	4.00"	7.00"
C	2.50"	5.00"
D	2.50"	5.00"
E	.75"	1.00"
F	4.00"	7.00"
G	1.75"	3.50"
Vertical Load Capacity (**)	90LBS	200LBS
Horizontal Load Capacity (**)	90LBS	200LBS
Air Usage	0.8 scfm @ 60 psi	1.0 scfm @ 60 psi

Accuracy

Horizontal & Vertical Straightness of travel

Class **A1** =

5.0μ"/In. (0.125μm/25.4mm) & 30μ"/6.00" (0.75μm/152mm)

Class **A2** =

15.0μ"/In. (0.375μm/25.4mm) & 90μ"/6.00" (2.25μm/152mm)

Ordering Information

L.A.B. - **4S** - **12** - **A1**

Carriage Size Travel (Inches) Accuracy Class

Slide performance can be effected by method of mounting the rail and loading. Consult ABTech's applications engineering. Specifications are at 4kgf/cm2 (60psi)
 ** - Load capacities are estimated at the center of the carriage in both directions. Consult ABTech's applications engineering for moment loading and stiffness considerations.
 Specifications are subject to change without notification. Special accuracies can be supplied.

Tel: 603-358-6431
Fax: 603-358-0916

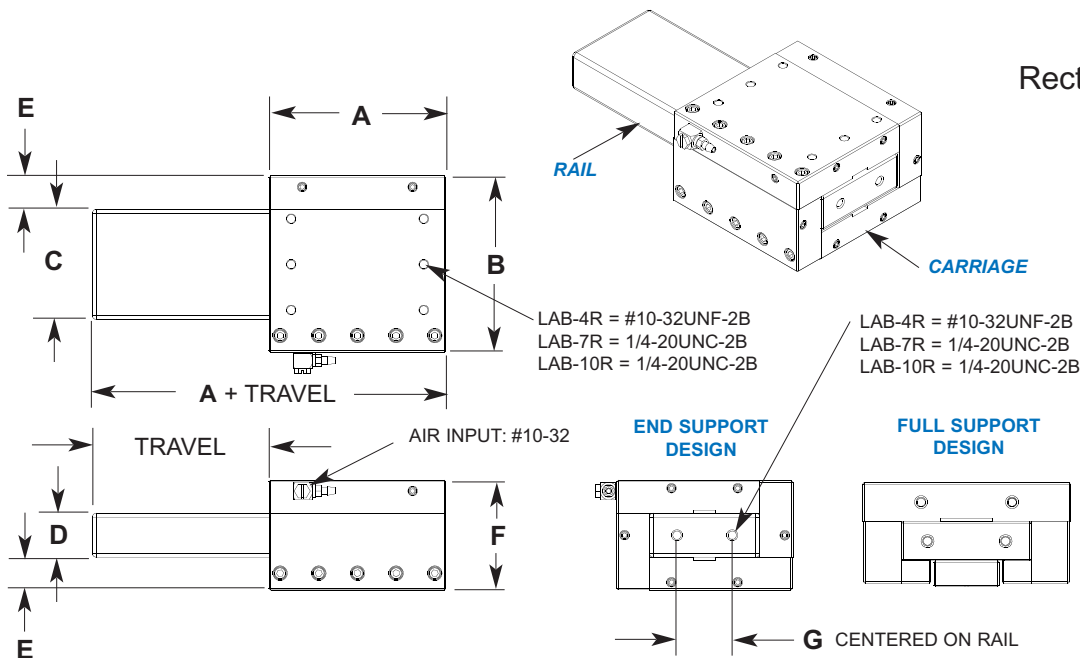
ABTech inc.
Pride In Precision
 On Line: www.abtechmfg.com

LAB - Linear Air Bearing Slides

Specifications

LAB-R Series

Rectangular Rail Linear Box Slides



Consult ABTech for:

- Special sizes and travels
- Custom end mounting
- Custom hole pattern on carriage faces
- Motor drives
- Stacked configurations
- Higher accuracies

	LAB-4R	LAB-7R	LAB-10R
TRAVEL	1.00" - 12.00" End Support 1.00" - 24.00" Full Support	1.00" - 12.00" End Support 1.00" - 42.00" Full Support	1.00" - 18.00" End Support 1.00" - 48.00" Full Support
A	4.00"	7.00"	10.00"
B	4.00"	7.00"	10.00"
C	2.50"	5.00"	7.00"
D	1.00"	2.00"	4.00"
E	.75"	.875"	1.50"
F	2.50"	3.75"	7.00"
G	1.25"	3.50"	5.50"
Vertical Load Capacity (**)	90LBS	200LBS	350LBS
Horizontal Load Capacity (**)	35LBS	100LBS	200LBS
Air Usage	0.8 scfm @ 60 psi	1.0 scfm @ 60 psi	1.5 scfm @ 60 psi

Accuracy

Horizontal & Vertical Straightness of travel

Class **A1** =

5.0μ"/In. (0.125μm/25.4mm) &
30μ"/6.00" (0.75μm/152mm)

Class **A2** =

15.0μ"/In. (0.375μm/25.4mm) &
90μ"/6.00" (2.25μm/152mm)

Ordering Information

L.A.B. - **4R** - **12** - **A1**

Carriage Size 4R, 7R Travel (Inches) Accuracy Class

Slide performance can be effected by method of mounting the rail and loading. Consult ABTech's applications engineering. Specifications are at 4kgf/cm2 (60psi)
 ** - Load capacities are estimated at the center of the carriage in both directions. Consult ABTech's applications engineering for moment loading and stiffness considerations.
 Specifications are subject to change without notification. Special accuracies can be supplied.

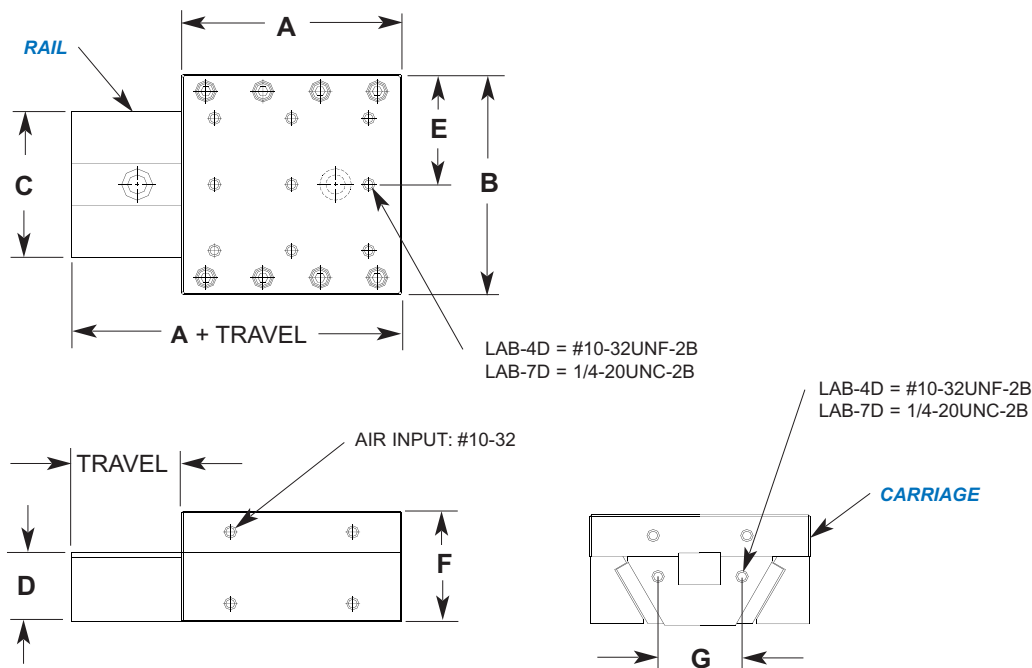
Tel: 603-358-6431
Fax: 603-358-0916

ABTech inc.
Pride In Precision

On Line: www.abtechmfg.com

LAB - Linear Air Bearing Slides

Specifications



LAB-D Series Dovetail Rail Linear Slides

Consult ABTech for:

- Special sizes and travels
- Custom end mounting
- Custom hole pattern on carriage faces
- Motor drives
- Stacked configurations
- Higher accuracies

	LAB-4D	LAB-7D
TRAVEL	1.00" TO 20.00"	1.00" TO 24.00"
A	3.94"	7.00"
B	3.94"	7.00"
C	2.60"	4.63"
D	1.23"	1.77"
E	1.97"	3.50"
F	1.97"	2.95"
G	1.50"	2.75"
Vertical Load Capacity (**)	55LBS	130LBS
Horizontal Load Capacity (**)	22LBS	65LBS
Air Usage	0.5 scfm @ 60 psi	1.0 scfm @ 60 psi

Accuracy

Horizontal & Vertical
Straightness of travel

Class **A1** =

5.0μ"/In. (0.125μm/25.4mm) &
30μ"/6.00" (0.75μm/152mm)

Class **A2** =

15.0μ"/In. (0.375μm/25.4mm) &
90μ"/6.00" (2.25μm/152mm)

Ordering Information

L.A.B. - **4D** - **12** - **A1**
CarriageTravelAccuracy
Size(Inches)Class

Slide performance can be effected by method of mounting the rail and loading. Consult ABTech's applications engineering. Specifications are at 4kgf/cm2 (60psi)
 ** - Load capacities are estimated at the center of the carriage in both directions. Consult ABTech's applications engineering for moment loading and stiffness considerations.
 Specifications are subject to change without notification. Special accuracies can be supplied.

Tel: 603-358-6431
Fax: 603-358-0916

ABTech inc.
Pride In Precision

On Line: www.abtechmfg.com